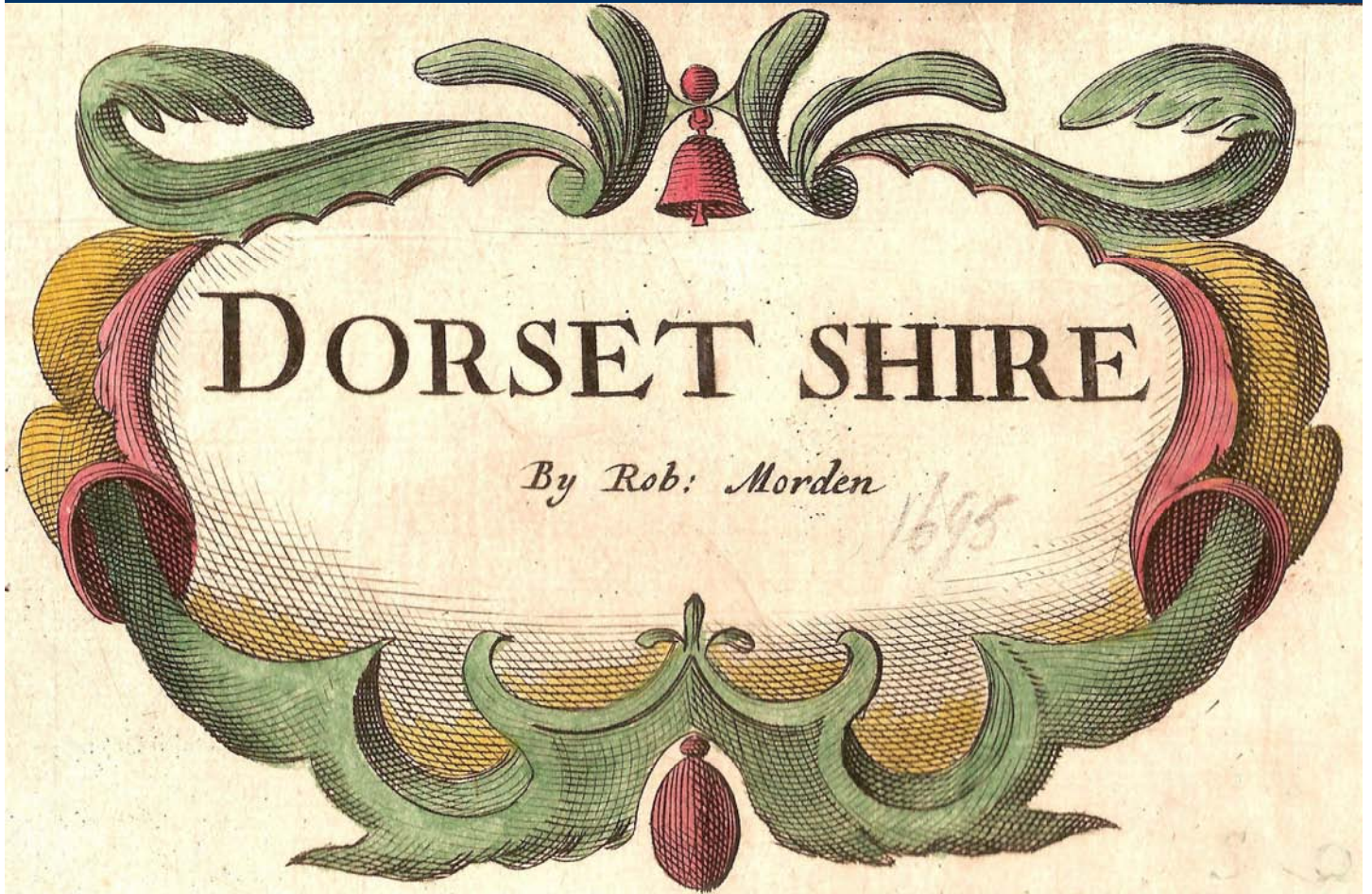


DMA Newsletter

New Year Edition 2008



Dear all

First of all I would like to thank our departing Chairman Emma Ayling and Vice Chair Sue Beckett for all their efforts over the last 4 years. They have started a process to ensure that not only will the DMA continue but will grow in strength and purpose through the consultation with our membership. The Forward Plan derived from this process will be published shortly, although this may be delayed by the absence of a Secretary and Vice Chair.

Sadly we are losing Kath Lynch who is moving to a new job and new life in Liverpool, leaving the Tank Museum at the end of January. I would like to thank her for her hard work and extremely organised efforts as Secretary and on behalf of all members wish her every success and happiness in her new post - (as a Liverpool supporter I would also like to arrange a visit when she settles in).

I would also like to welcome Charles Cooper who has kindly taken on the role as Treasurer and new Committee Members Dave Joy from the Nothe Fort, Dave Riches from Weymouth Museum, Pam le Bas from Blandord Museum, Pam Langdown & Louise Dennis from the Museum of Design in Plastic.

Dorset County Museum

NEW EXHIBITION OPENS AT DORSET COUNTY MUSEUM

Peter Thursby: A Retrospective
19 January to 15 March 2008

Exeter-based artist Peter Thursby has established an impressive reputation as a sculptor. His large-scale commissions can be found in London, Dallas and Exeter. He has also made sculptures on a domestic scale for interiors.

The exhibition shows a wide range of Thursby's sculptures, drawing and paintings from the 1950s through to the 1980s. Many of the paintings on show have not been seen since the 1960s when the artist transferred his energies to sculpture.

Many of his early sculptures were abstract, aggressive and almost brutal. However, his first public commissions were elegant creations, cutting into the air with balance and refinement. The artist has worked in a variety of materials including bronze, slate, marble and silver. Thursby's career to date has been a rich, varied and immensely productive, and continues to be so.



Besides paintings and sculptures the exhibition will feature photographs, sculptural drawings, maquettes (models for sculptures) and working sketches.

A publication by Canterton Books *Peter Thursby* by Vivienne Light & Simon Olding will accompany the exhibition at a special discount price.

Book Details:

Peter Thursby Vivienne Light & Simon Olding

Cloth hardback, 146 pp with 136 illustrations (76 colour). 30 (h) x 23 cm

Special price £20

Available from Canterton Books, Yawl Cliff, Yawl Hill Lane, Uplyme, Lyme Regis, DT7 3XF or email: vivienne_light@hotmail.com (P& P extra of £3)

For more information please Tel: 01305 262735

Dorset County Museum Cont.....

Recent improvements in the care of ancient objects: activities in Dorset County Museum's geology reserve collection

Thanks to David Tucker, Dorset's County Museums' Advisor, Dorset County Museum (DCM) secured South West Museums Hub grant money last year (2007). This funded two contractors to work with our geology collection in October and November. Paul Ensom, DCM's Assistant Curator in the 1970s and 1980s and very familiar with our geology collection, spent ten days helping rationalise storage spaces; Nigel Larkin, a natural history conservator who has been contracted to work at DCM before, conserved several specimens and offered advice during his five days here.

Since Paul Ensom ended his employment at DCM, time gaps between curators and a loss of knowledge of previous curatorial systems have led to muddles developing in the geology collection. Paul explained the systems used previously so that volunteers and I can manage the collection and associated documentation more efficiently and effectively. Paul minimised the number of specimens on floors to reduce the risk of damage to specimens and tripping hazards for staff and volunteers. He also undertook a conservation audit, and from this produced a series of recommendations of future work. Advice on long-term conservation, and health and safety issues, were provided in his report.

Many of the fossils Nigel conserved are in shales and marls and vulnerable to deterioration. The adhesive Paraloid B72 was applied to several specimens to fix breaks, and mixed PB72 was diluted to 5%-25% with acetone to consolidate and/or provide a surface barrier from dust and humidity fluctuations. Gaps were filled with a paste of diluted PB72 mixed with very fine inert glass beads. Fresh coats of acrylic paint were applied to specimens and their mounting media where necessary.

Ammonites a) before and b) after conservation &
Pliosaur limb bone fossil a) before and b) after conservation



We are extremely grateful to David, Paul and Nigel for all their help and advice.

Jenny Cripps, Curator of Collections

The Sturminster Newton Museum & Mill Society

The Sturminster Newton Museum & Mill Society was recently awarded a Heritage Lottery Fund grant of £47,700 under the “Your Heritage” scheme. The Society started its campaign to provide the town with a new, centre of town, Museum in November 2006. After four months, a relatively short time, of hard work fund raising, enough money was raised from an enthusiastic and supportive community to place a deposit for a mortgage on Old Market Cross House, a Tudor building which was being sold by the Town Council.



Thanks to the HLF the Society now have the means to undertake mandatory building work to make the premises safe for public access and to refurbish and equip the building as a Museum. We will also be able to provide materials for talks, exhibitions and workshops for both the enjoyment and education of all sections of our community. The Society is looking forward to a really exciting and successful future for the Museum.

Sylvia Denham, (Curator) Sturminster Newton Museum & Mill Society.

The Priest house Museum & Garden

Housekeeping training at the Priest's House Museum, 3-5 December 2007

To take on this essential, though often neglected, aspect of collections care, the Priest's House Museum is recruiting a team of housekeeping volunteers. At the beginning of December, we offered any volunteers interested in joining the team a three-day training course on-site.

The course was run by Jennifer Dinsmore of Hallahan Associates and funded by a Heritage Lottery Fund Project Planning Grant. It was fully booked, with 12 volunteers attending. The theory covered included preventive and remedial conservation, object handling, cleaning, packing objects, and pest monitoring. There were also plenty of opportunities to put this into practice.

As the next stage, we are now developing a housekeeping plan. A detailed programme of work will be drawn up, with these volunteers working together in small teams regularly to deliver it.

Volunteer presentation

On the 14 January 2008, the Chairman of East Dorset District Council presented special name badges to those with 5, 10, 15, 20, 25 and 30 years of dedicated volunteering at the Priest's House Museum; 52 volunteers in all. It is only through their support and enthusiasm that the Museum can continue to offer the services that it does. With about 140 volunteers, they are essential to the managing of the Museum. They perform numerous roles, which include welcoming and interpreting the Museum to visitors, staffing the tearoom, acting as guides, teaching schools, managing the shop stock, office administration, as local history librarians, as honorary keepers of costume and photographs, cataloguing the collections, helping research and display exhibitions, as gardeners and by serving on the board of trustees. It is an invaluable way of involving the local community in the work of the Museum.

New season

The new season begins at the Priest's House Museum on the 21 March 2008. Visitors will be able to see two new exhibitions.

The first features costume on loan from the National Trust at Kingston Lacy and is supported by the Heritage Lottery Fund. Walter Ralph Bankes (1853-1904), joined the Queen's Own Dorset Yeomanry in 1873 and there are a couple of photographs in the archive showing him in uniform. In 1897, he married Henrietta Jenny Fraser, a famous beauty of Scots-Dutch descent. Although only married for seven years, they had three children, Henry John Ralph, Daphne and Viola. A selection of their outfits will be chosen for the exhibition in the costume gallery.

'*Cabinets of Curiosity*' will take a look at the more unusual items collected by the Museum over the years. Themes to be explored include overseas travel and souvenirs brought home from as far east as the Orient, and private collectors, what they collected and why.

The Keep Military Museum

We have had a busy autumn and winter at the Keep Museum as the building has been undergoing extensive external and internal renovation work. It has also been redecorated and re-carpeted. This has led to some upheaval and the temporary closure of some areas of the Museum but visitor numbers have remained constant.

The staff has been busy preparing a new gallery. A Heritage Lottery Fund Grant has enabled us to create a new Devonshire and Dorset Regiment gallery on the third floor. This will be open in the spring of 2008. This has also given us the opportunity to refurnish the cases on our first floor which give a chronological history of our regiments. We have been able to add more cases and new artefacts to enhance both our Dorset and our Devon displays. We plan to put on two small exhibitions over the next few months: the Centenary of the Battle of Bois des Buttes and the Centenary of the Territorial Army.

We have received many additions to our collection over the past few, in particular Devonshire Regiment photographs and War Diaries. These are currently being accessioned in to the collection.

There have been no changes in our staff although we have been able to welcome some new volunteers to the Museum.



Royal Signals Museum

WOMEN AT WAR – The Auxiliary Territorial Service (ATS)



In 1938 the government decided to establish the Women's Auxiliary Territorial Service (ATS). An advisory council was set up and included representatives of the Territorial Army, the Women's Transport Service and the Women's Legion. It was decided that the ATS should be attached to the Territorial Army and that the women would receive two-thirds of the soldiers' pay. The ATS was formally established on Sept.9th 1938, with the intention to free as many men as possible for service at the Front.

The women wore khaki uniforms with black shoes. Even their underwear was issued and khaki in colour. From the start there was not intention of allowing them to go into action with the men or to use firearms, but apart from that they did the same work as the men. They were employed as cooks, clerks, telephonists and translators. They drove everything from staff cars to trucks and had to be able to maintain and repair the vehicles. TATS drivers were used as lorry drivers, motorbike messengers and engineers. In fact Women did most of the driving in the army.



The girls of the ATS eventually did many jobs that they were not originally intended to do, such as helpers on the Anti - Aircraft guns. The girls were in charge of the equipment used for spotting enemy aircraft. Although not officially allowed to fire the guns themselves, many ATS Veterans recall that the men sometimes allowed them to have a go! Conscription was introduced in 1941 and the girls of the ATS were then on an equal footing with the men and subject to Military law. As more men joined the war effort, it was decided to increase the size of the ATS, with numbers reaching 65,000 by September 1941.



The ATS served in most theatres of war, as well as in locations such as Washington and the Caribbean. The variety of work also became much greater – as well as domestic and clerical trades, more technical work became available, and many women served with Anti-Aircraft Command, although they never (officially!) fired the guns. At its peak in June 1943, 210,308 officers and auxiliaries were serving with the ATS. Women were not allowed to fight in battle but as more and more men were called overseas to fight, their duties extended to include radar operators, military police, gun crews, and many other operational support tasks. By June, 1945, there were over 190,000 members of the Women's Auxiliary Territorial Service

The ATS continued in existence until Feb.1st 1949, when the Women's Royal Army Corps was established.

The Cavalcade of Costume

The Cavalcade of Costume is opening a new exhibition of bridal wear, which will include some of the dresses held at the museum which have never been seen before. This exhibition will be divided up into a series of pretty scenes with an explanations of the social history to accompany the dresses and will comprise of some twenty wedding outfits and accessories dating from the 1870's to the 1960's. The glamorous wedding dress shown in our invitation was originally bought at Saks, Fifth Avenue New York and was worn on January 12th. 1957.

Much research has been carried out for the exhibition in order to trace the history behind the wedding dresses.

One such story involves a young lady in 1947, who went to view a house with her parents, the vendor suggesting that they were not to enter one of the rooms as their son was home on leave from the war suffering from shell shock. The young lady peeped through the open door and saw the young man they smiled at each other , and later, as they viewed the garden the young man came out to speak to her and as they say the rest is history.

To continue, the material for this bride's wedding dress also had an adventure! It was almost lost on a bus during in a bad snow storm! However, it was rescued. The design for, and the making of the dress was supervised by her Grandmother and was made up at her Grandfather's department store in the North of England. The dress is made from white crepe and has buttons down the back with a rouleaux trim. There are many different tales to be told and I'm sure that you will find this exhibition both beautiful and intriguing.

Elaine Williamson.
Publicity and Marketing.
The Cavalcade of Costume



Shaftesbury Abbey Museum & Garden & Gold Hill Museum & Garden

We have just received our new 2008 leaflet from the printers, and with a range of exciting events at both museums over the coming season, we are looking forward to both museums opening their doors again on the 21st March.



Shaftesbury Abbey Museum & Garden

As part of a series of events this year to celebrate 20 years of the creation of the Anglo-Saxon herb garden at Shaftesbury Abbey, Julie Wood will be giving a talk on Anglo-Saxon herbs and their medical uses today. The talk will take place

on Wednesday 13th February 2008 at 7.30 p.m. at Shaftesbury Abbey Museum & Garden. The Herb Garden at Shaftesbury Abbey was originally called "Aethelgifu's Herb Collection" and was created in 1998 under the direction of Lady Jane Renfrew of Lucy College, Cambridge. It was named after King Alfred's daughter and first Abbess, Princess Aethelgifu, and the selection of herbs attempts to reflect what is known of their uses in Anglo-Saxon times. Other events included in this celebration include the Anglo-Saxon Herb Walk on 10th and 11th June, and the Friends of Shaftesbury Abbey Annual Lecture given by Lady Renfrew on 29th October.



Gold Hill Museum & Garden Improvement Project

Gold Hill continues to raise funds to improve the museum. 3 of the main reasons why the museum needs to improve are:

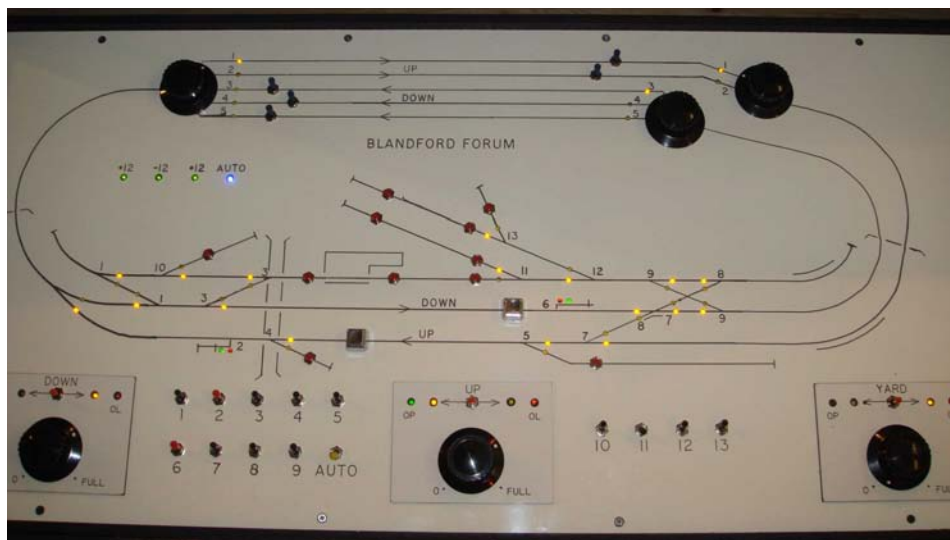
1. The museum can not cater for school parties of over ten children easily and many events have to be held outdoors and are dependent on the weather. *This project includes a room for educational purposes.*
2. The library is too small for all our books and archive material and study space very limited. *The project includes a dedicated library and archive room which allows room for study.*
3. Part of the back of the museum building, which is Grade II listed, floods during heavy rain falls. *This project includes urgent work to the building including much needed work to the roof and guttering.*

This project is designed to ensure that Gold Hill Museum tells the story of Shaftesbury to residents and visitors using objects from our collection and passive and interactive display techniques. The current buildings are listed and owned by the Shaftesbury & District Historical Society. The Shaftesbury & District Historical Society (who own the museum), in collaboration with local schools and other heritage bodies in Shaftesbury, has identified a requirement for expansion of workspace for presentations and storage for objects and archives to support the research and education needs of residents and visitors. The Museum has the expansion capacity and provides an ideal location. The project will widen the understanding of our heritage through improvements to visitor & volunteer facilities; exhibitions throughout the museum; access for research and education through the use of the archive and library; and create a workspace for group visits in particular educational use. We will also be able to more effectively carry out urgent maintenance work to our buildings.

Blandford Museum

In October 2007, Blandford Museum was delighted to receive an HLF grant of nearly £22,000, for a Young Roots project. A steering group of students from Blandford School, Bryanston School, and the local youth group, 'Treads' has now been set up and projects agreed which will use the Museum's facilities.

In November, the first fund-raising meeting of Blandford Museum Railway Club was well-attended, when it presented a public showing of several films of local and railway interest. The club's working meetings happen every Wednesday in the museum, when anyone interested in model-building can come. The attached photograph shows the control panel for the accurate model of Blandford Station, currently being created. (Contact: David Cash at 01258 450029)



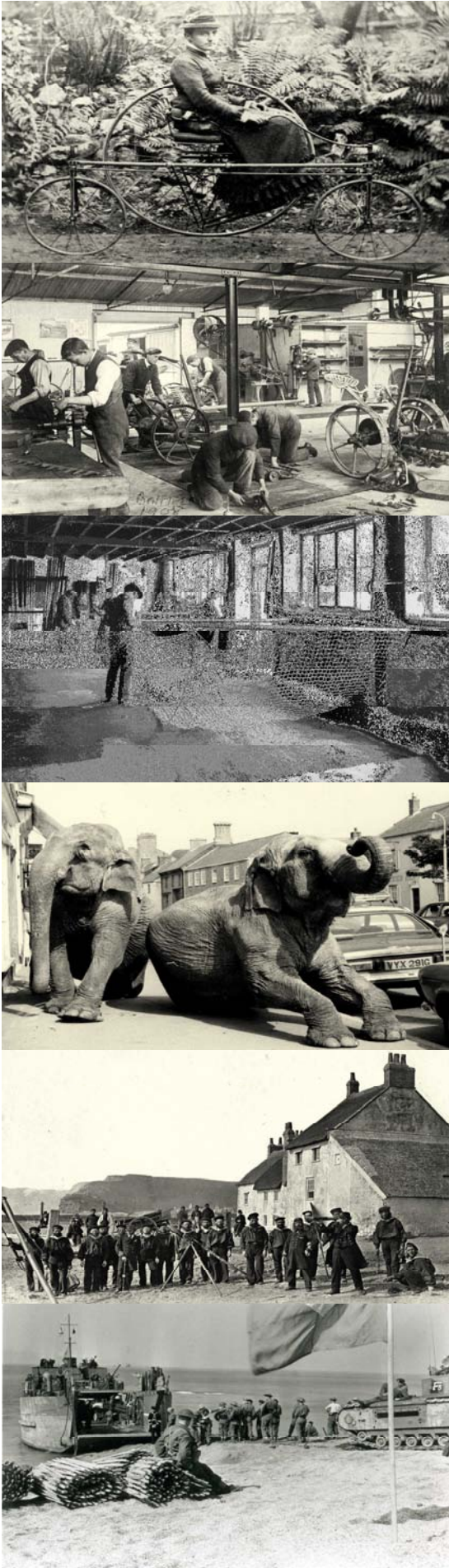
This year, 'Friends of Blandford Museum' is being set up, with more fund-raising functions to encourage interest and involvement for those wishing to support the museum. As before, we welcome visitors at all our talks (members £2, non-members £3 - contact Sylvia Hixson 01258 458911). The remaining ones of the 2007/8 season are:

1. **Wednesday 27 February, 7.30 pm. in Woodhouse Gardens Pavilion, The Tabernacle, Blandford.** "Kingcups By Any Other Name" (Gerald Ponting).
2. **Tuesday 18 March 7.30 pm. in Methodist Hall, The Close, Blandford.** "Blandford Museum Expedition to Armenia" (Peter Andrews).
3. **Tuesday 22 April, 7.30 pm. in Methodist Hall, The Close, Blandford** "Oral Histories" (Sylvia Hixson).

The new season starts on Sat 22 March, 2008, continuing the successful Free Entry policy, started last year. Visitor numbers will again be monitored and questionnaires used, in order to analyse the results.

On 17th May, the newly-established Dorset History Forum will meet in Blandford and our museum will be taking an active part in planning and displaying aspects of Blandford history. Town tours will be included.

Bridport Museum



Bridport Museum is lucky enough, through the support of a local firm, to have begun a project that will see the majority of its photographs digitised and on the web by the summer.

The project has 3 main objectives

1. **Digitise the collection** - Over 70% of the museums 20,000 images have been digitised by a dedicated museum volunteer throughout the last Year. This will ensure the safety and longevity of the collection and make it a much more user-friendly and versatile resource.
2. **Improve access** to the photographic collection by making the images available to remote users.
3. **Raise revenue for the museum** - The images will be available in varying sizes and with differing licensing agreements attached. Each of the images will be available for purchase through PayPal and carefully watermarked to avoid filching!



www.bridportmuseum.co.uk

Poole Museum

Poole Museum has received a grant of £5,300 from the Cultural Hub towards their involvement in the Hub's Right to Vote project, which aims to promote and develop learning resources for Citizenship. Other partners in the project include the Dorset History Centre, Poole Children and Young People's Services, Poole Legal & Democratic Services and a number of local schools. The project will partly focus on the life of Minnie Baldock, a prominent suffragette who lived in Poole.

The museum is holding a series of free half term activities during the February half term, including:

- | | |
|------------|--|
| 16 Feb | 'Amazing Iron Age': everyday life in the Iron Age including making pots, jewellery and a mini coracle |
| 19, 21 Feb | 'Pirates Ahoy!': creating pirate ships, flags and treasure maps |
| 20 Feb | 'Roman Occupations': making and playing Roman games and creating mosaic pictures |
| 22 Feb | 'Bugs and Butterflies': finding out about local insects and butterflies, making masks and clay bugs |
| 23 Feb | 'Recognising Reptiles': a session about reptiles and amphibians in Poole, led by the Herpetological Conservation Trust |

An exhibition commemorating the centenary of the start of the Scouting movement in 1908 is due to open at Poole Museum in March 2008. The centenary of the experimental camp on Brownsea Island in 1907 was widely celebrated last year. But it was the publication of Baden-Powell's 'Scouting for Boys' in 1908 that really triggered the establishment of the first Scout groups, followed by the huge international growth of the movement which today has 28 million members in 155 countries. It is hoped that some significant objects from the early days of Scouting will be on display in the exhibition. Further details will be available soon.

SOUTH WEST SOCIAL HISTORY CURATORS GROUP

"Where Land and Sea Meet" is a major new touring exhibition, funded by Renaissance South West, opening in North Somerset Museum this month. It explores the past, present and future of the fascinating, varied and historic coast of the South West. North Somerset Museum has worked in partnership with various professionals and organisations to develop this project after they were successful in securing financial support from Renaissance in the Regions. The funding was administered through Plymouth City Museum, to research, assemble and produce the exhibition. Vicky Dawson and Felicity Hebditch carried out the research and in addition to the exhibition is a DVD which will take visitors on a visual tour of the coast and learning activates relating to the different themes.

It will be on show in North Somerset Museum, Weston-super-Mare from 19th January to 6th September. It will then be available to any other cultural organisation. Full guidance notes on the content, length of loan and other conditions will be available in the Spring but Liz and Jane are happy to take details in advance of anyone interested in loaning the exhibition. For further information on the exhibition please contact Liz Neathey or Jane Hill, Museum Officers at North Somerset Museum on 01934 621028.

Beaminster Museum



Happy New Year (a bit belatedly) and getting ready for the 2008 season is well underway. We kick off a week before we open with a Book Fair on 15th March from 10 -4. The perfect opportunity to add to your already groaning bookshelves!

Our opening exhibition from 22nd March is "Who Do You Think They Were? Little-Known Local Luminaries". For such a little place we have uncovered quite a number of people who made their mark on the national, and in some cases international stage. So who was conversant in 80 (yes eighty!) languages, who was big in the world of lifts and elevators and whose furniture graces the White House in the USA? Answers can be found at the exhibition, along with information about ten other fascinating local individuals, which runs until Sunday 20th April.

A new venture this year is our first Friends Exhibition. To ensure that we have regularly changing displays throughout the season we decided to approach our own Friends to see if they would be prepared to share their collections with our visitors. A display of Mola Textiles from San Blas, Panama together with Inuit (Eskimo) Sculpture from the Canadian north will be on show from the 22nd April for three weeks. We already have offers of other displays so it looks as though it might have been another "good idea".

Our temporary display space on the ground floor is now fully booked for the season with six mini-exhibitions showcasing Lost Orchards of West Dorset, Beaminster Singers 20th Anniversary "From Glee to Oratorio", The Beaminster Camera Club, and Samuel Hearne which will compliment our major summer exhibition of art relating to Coleridge's Ancient Marine. This will be the first time the exhibition have been seen in the southwest and it will open for the Beaminster Festival on 28th June and run until 7th September. Definitely not to be missed.

Jenny Cuthbert
Collections Curator

The Museum of South Somerset

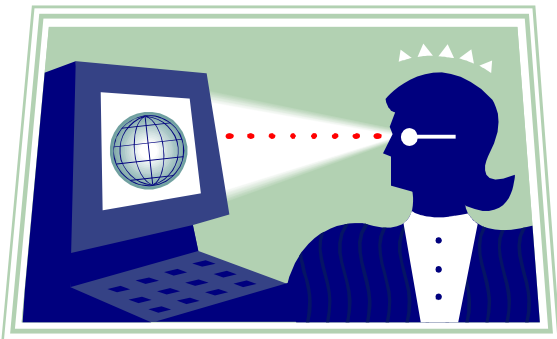
The first ever flight over Mount Everest took place on the 3rd April 1933 and the aircraft that was used was a Westland Wallace from Yeovil. To celebrate the 75th Anniversary of this achievement, Lord Selkirk, the son of the original pilot is coming to Yeovil to give a lecture on the flight.

The lecture will take place at Aerosystems International in Yeovil on the 3rd April 2008. The firm Aerosystems developed out of Westlands, specialising in high altitude equipment and technology, which was used during the flight.

The Museum of South Somerset in Yeovil, will be putting on an exhibition to coincide with this talk. A volunteer, Anne Chapman, has undertaken detailed research into the flight and it is thanks to her, and other volunteers' that the lecture and the exhibition are taking place.

For further information please ring: 01935 462855 or e-mail heritage.services@southsomerset.gov.uk.

DMA Website



The Museum website is under construction and I would like all DMA members to email me with the following current details to adam@royalsignalmuseum.com

including;

1. Opening times
2. Contact details
Email,
Telephone & fax
Web address for those who have their own sites.
3. A selection of 2-3 photographs of their museum or collections.
4. 100 words of descriptive text.
5. Admission prices – if you would prefer that these are not included on your website entry please state clearly.

NB> All textual details should be in word form and the photographs should be sent separately as a .jpg files – NOT IMBEDDED IN ANOTHER DOCUMENT, please !

Training

MODES User Support Group in Dorset Tuesday 4 March 10am-4pm

Dorset History Centre Dorchester

A *free* one-day informal support group for MODES users in Dorset. Meet other MODES users in your area, share ideas, raise problems & discuss best practice. Some laptop computers will be provided but you are welcome to bring your own. Lunch & refreshments will be provided.

Provisional Programme

Recording conservation information in MODES (presented by Kirsty Bell, Registrar with Oxfordshire Museum Service and board member of the MODES Users Association) Using MfW for oral history project validation rules

Please reply by 15 February if you are interested in attending, either by email to lperrin@waitrose.com

Copyright Essentials: An MDA Training Day **MDA Trainer: Naomi Korn** **Tuesday 18 March 2008** 10am-4pm Dorset History Centre Dorchester

This hands-on practical one day training course provides an *introduction to copyright* and its importance within the context of caring for collections. Participants will be introduced to the tools they need to manage copyright as part of their daily work. The day will also examine in detail how rights can be cleared, the role of copyright audits, tips for tracing rights holders, due diligence and the management and protection of rights within the context of digitization and publishing projects.

Training is provided by Intellectual Property Officer at the MDA AND IPR Consultant, Naomi Korn (see www.mda.org.uk/staff-nk). For more details about the course and MDA training see www.mda.org.uk/copyess.

The day is completely FREE day and includes lunch and refreshments.

As one of the most requested subjects for a training session by museums in Dorset, there will be a limit of 2 places per organisation. Please book early to ensure your place.

Please reply by 15 February to Louise Perrin lperrin@waitrose.com.

WE NEED YOU HELP

As you can see from the attached list we are missing to essential roles within the Committee. Please anyone who is prepared to serve and assist please contact me by e-mail or telephone on 01258 482 248.

DMA Committee as at 22nd January 2008

Chair

Adam Forty (Royal Signals)

adam@royalsignalsmuseum.com

Vice-chairman

Position vacant

Secretary

Position vacant

Treasurer

Charles Cooper (The Keep)

keep.museum@talk21.com

Membership Secretary

Louise Perrin

lperrin@waitrose.com

Newsletter Editor

Alice Martin (Bridport)

curator@bridportmuseum.co.uk

Programme Secretary

James Webb (Priest's House)

JWebb@eastdorsetdc.gov.uk

Representative on SW Fed

Sue Beckett (Poole)

s.beckett@poole.gov.uk

County Museums Adviser

David Tucker

D.A.Tucker@dorsetcc.gov.uk

MLA SW liaison

Position vacant

Committee members:

Judy Lindsay (Dorset County)

judy@dorsetcountymuseum.org

Max Hebditch (Lyme Regis)

max@hebditch.org

Stella Ancell (Royal Signals)

museumcurator@hq.rss.army.mod.uk

Emma Ayling (Priest's House)

EAyling@eastdorsetdc.gov.uk

Pam Langdown (MoDiP)

PLangdown@aib.ac.uk

Louise Dennis (MoDiP)

ldennis@aib.ac.uk

Pam Le Bas (Blandford)

p.m.lebas@btinternet.com

David Riches (Weymouth)

friends@weymouthmuseum.org.uk

Dave Joy (Nothe Fort)

hlfnothefort@hotmail.com